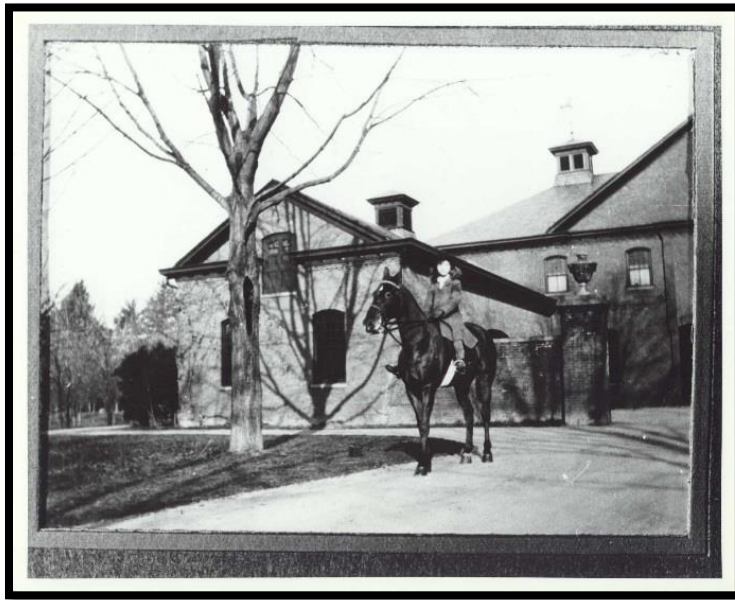


A SELF-GUIDED WALK AT STAATSBURGH STATE HISTORIC SITE

- ❖ Start your walk at the gravel parking lot below the hill from the mansion. Visit the kiosk at the corner of the parking lot and the carriage drive to learn about Staatsburgh.
- ❖ Walk down the carriage drive towards the Hudson River. As you walk, notice that you are in an “allee,” an alley way of sugar maple trees. Sugar maples offer brilliant foliage in the autumn, a fact no doubt appreciated by the Mills, as Staatsburgh was their autumn residence.
- ❖ On your right, the brick building in the distance at the end of the parking lot was the estate’s carriage house.



- ❖ As you get close to the river, you’ll be able to see the Catskill Mountains in the distance, as well as the Esopus Meadows Lighthouse. The Esopus Meadows Lighthouse was built in 1839 and rebuilt in 1872; it is the only remaining wooden lighthouse on the Hudson. A local resident told us that in the 1920s, people would drive cars across the ice in the winter to visit the lighthouse keeper.

A SELF-GUIDED WALK AT STAATSBURGH STATE HISTORIC SITE

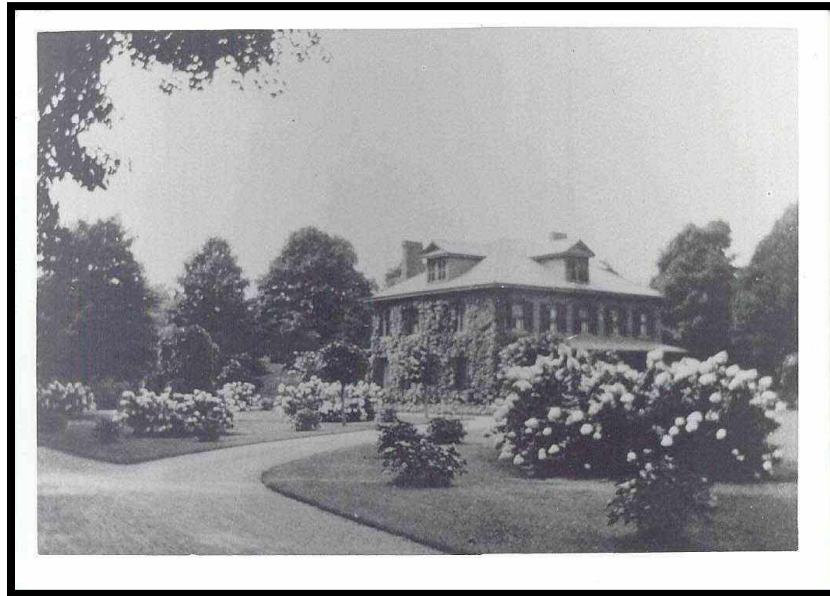
- ❖ Take the gravel path on your right to the waterfront. Down below the lip of the hill, out of site of the mansion, was a small complex of estate support buildings. The still-existing historic building at the waterfront was the Millses' 1895 powerhouse, where electricity for the mansion was generated. Next to the powerhouse was the pumphouse that pumped water from the river to a 10,000-gallon reservoir in the mansion's attic.



- ❖ The public lavatory building is where the Millses' icehouse stood. Estate employees cut ice here on Mills Cove and stored it in the icehouse for year-round use.
- ❖ The tiny island of stones in the river just in front of the powerhouse (visible at low tide) marks the location of the Millses' double boathouse. The Millses had canoes, rowboats, an iceboat, and a yacht. The yacht would anchor in the deeper water further offshore, and the Millses would travel from ship to shore in an electric launch.

A SELF-GUIDED WALK AT STAATSBURGH STATE HISTORIC SITE

- ❖ Enjoy the waterfront view! If you want to continue exploring, return to the carriage drive and follow it to the 1903 Estate Superintendent's house. Be aware before you go: while this interesting house still stands, it's no longer the gardener's showcase pictured in the historic photo.



- ❖ At the Superintendent's house, the carriage drive turns towards the river and leads into hiking trails in Mills Norrie State Park. For maps and information about the park, see <https://parks.ny.gov/parks/millsnorrie/maps.aspx>

After your tour, stay connected to Staatsburgh!



Scan or click this QR to view
Staatsburgh's current programs

Scan or click this QR to learn about
The Friends of Mills at Staatsburgh

